

PROPOSED WAREHOUSE BUILDING 1
963,100 SF
158 LOADING BAYS
210 TRAILER STALLS
479 PARKING STALLS

HEMION ROAD (CR 93) & SITE DRIVEWAY

Plotted: 09/16/22 - 9:42 AM, By: JIOM, Product Ver: 24.1s (LMS Tech)
File: \TRAFFIC PROJECTS\3709\Exhibits\2022-09 Truck Turning Exhibits\3709999004 TRUCK TURNING EXHIBITS.dwg, ---> 01 VEHICLE CIRCULATION PLAN

REV	DATE	COMMENTS	BY

DYNAMIC TRAFFIC, LLC
TRAFFIC IMPACT STUDIES • ACCESS PERMITTING
HIGHWAY & INTERSECTION DESIGN
TRAFFIC SIGNAL & ELECTRICAL DESIGN
245 Main Street, Suite 110
Chester, NJ 07930
T: 732.681.0760 | F: 908.879.0222
www.dynamictraffic.com

IV2 ROCKLAND LOGISTICS, LLC
VEHICLE CIRCULATION PLAN
PROPOSED INDUSTRIAL PARK AT 25 OLD MILL ROAD
SECTION 55.22 BLOCK 1, LOT 1
OLD MILL ROAD & HEMION ROAD (CR 93)
VILLAGE OF SUFFERN, ROCKLAND COUNTY, NEW YORK

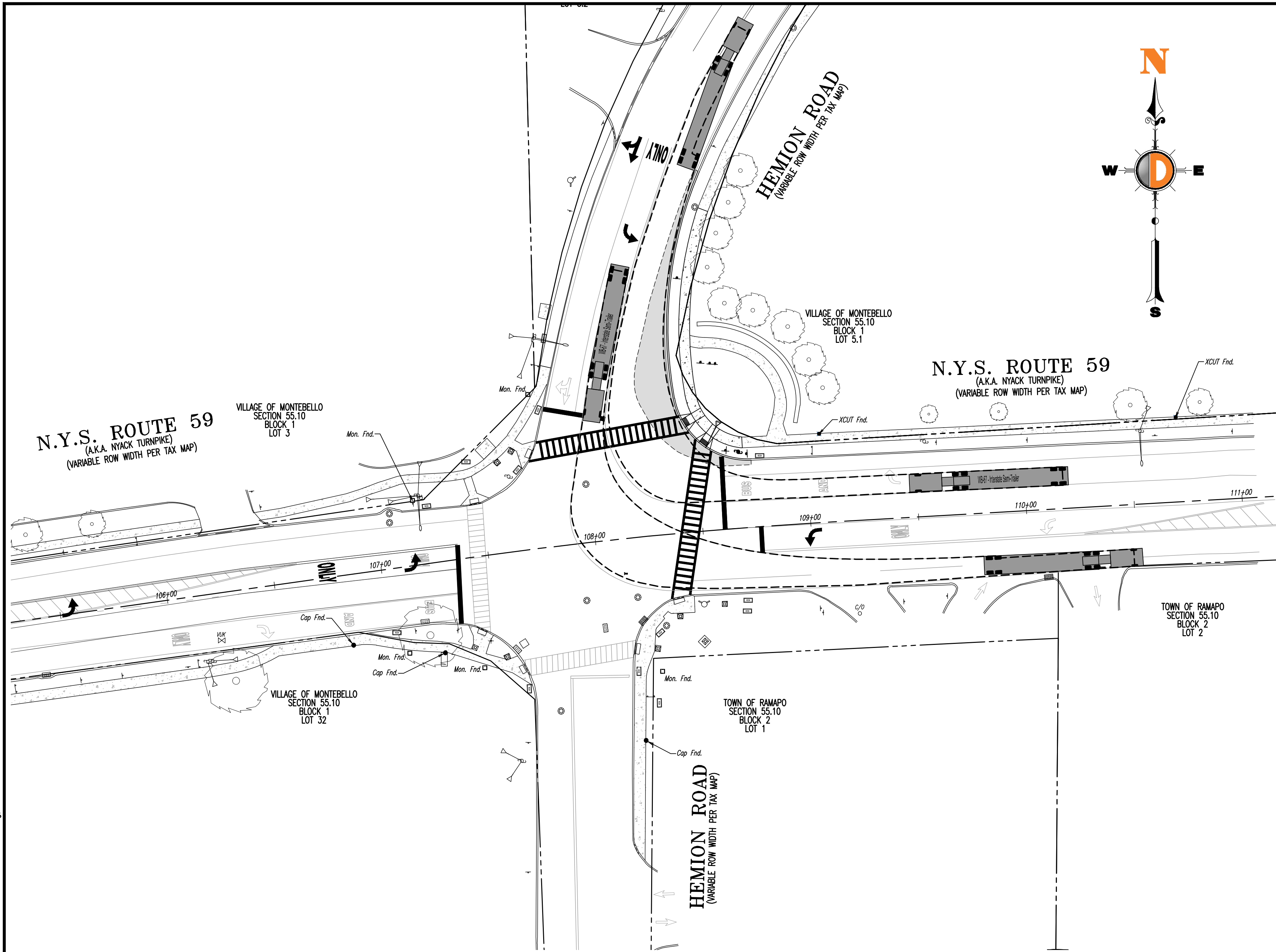
811 PROTECT YOURSELF
ALL STATES REQUIRE NOTIFICATION OF
ENGINEERS, DESIGNERS, OR ANY PERSON
PREPARING TO EXCAVATE THE EARTH'S
SURFACE IN ANY STATE
FOR STATE SPECIFIC DIRECT PHONE NUMBERS VISIT:
WWW.CALL811.COM

COREY M. CHASE
PROFESSIONAL ENGINEER
NEW YORK LICENSE No. 105693

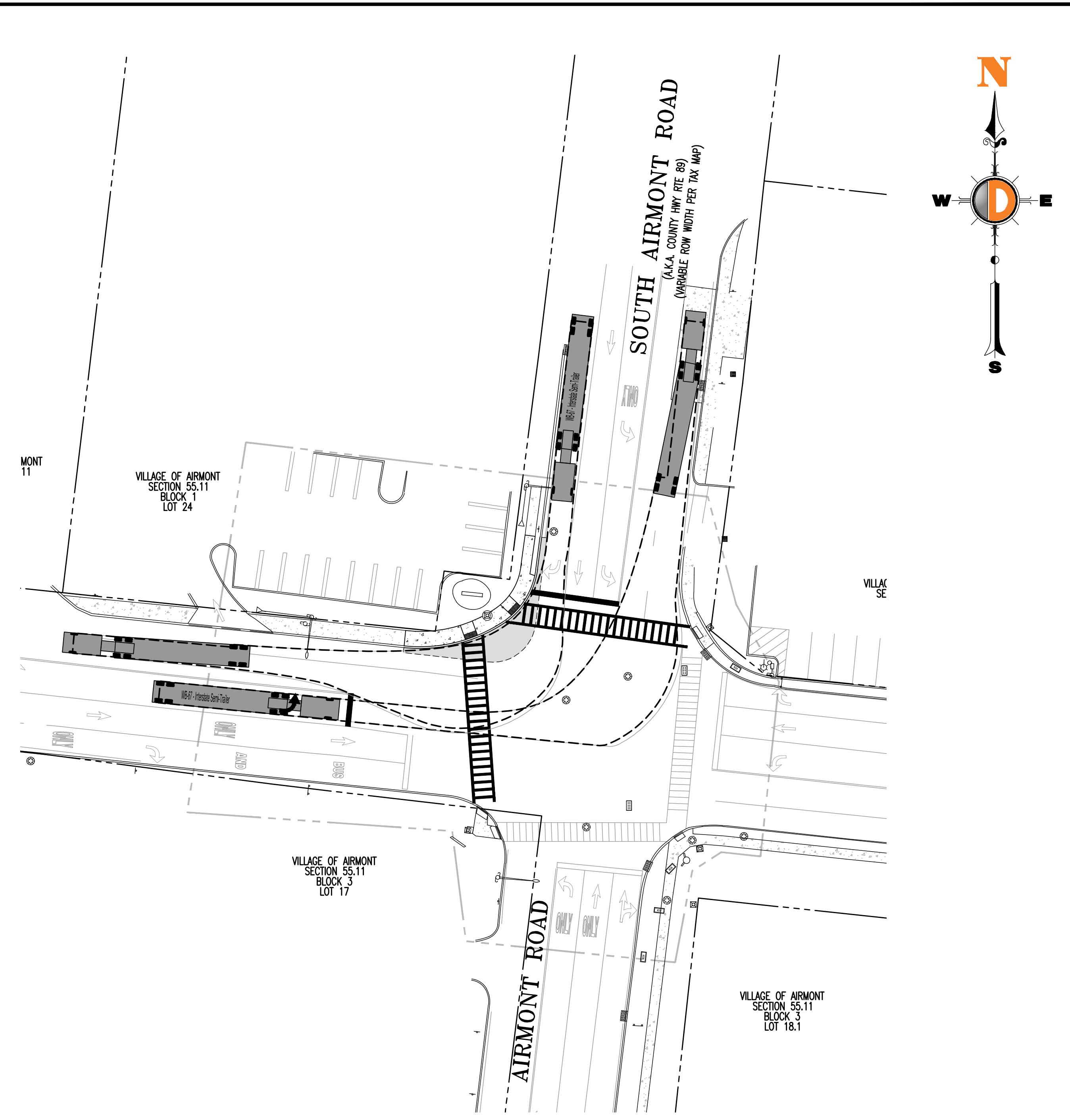
KEVIN M. SAVAGE
PROFESSIONAL ENGINEER
NEW YORK LICENSE No. 105693

SCALE: 1"=60'	DRAWN BY: JTT	DESIGNED BY: JTT	CHECKED BY: KMS
PROJECT NUMBER: 3709-99-004T	DATE: 09/16/2022	REV. #: 0	
SHEET NUMBER: 1			3

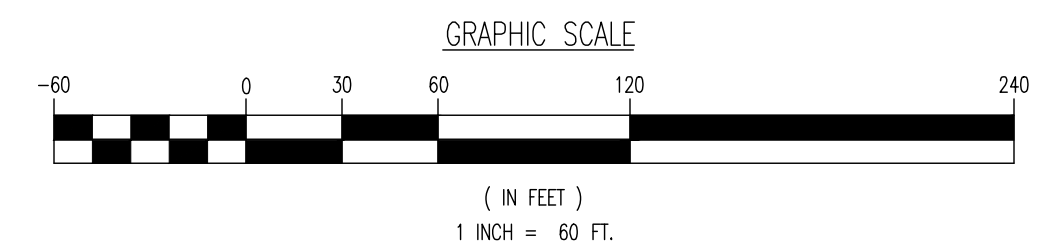
Plotted: 09/16/22 - 9:42 AM, By: Jtown, Product Ver: 24.1s (LMS Tech)
 File: T:\TRAFFIC PROJECTS\3709 Brookfield Properties\99-004T Suffern, NY\Low\Exhibits\2022-09 Truck Turning Exhibits\3709999004 TRUCK TURNING EXHIBITS.dwg, ---> 02 VEHICLE CIRCULATION PLAN



**LAFAYETTE AVENUE (NYS ROUTE 59)
& HEMION ROAD (CR93)/CAMPBELL AVENUE**



**LAFAYETTE AVENUE (NYS ROUTE 59)
& AIRMONT ROAD (CR 89)**



REV	DATE	COMMENTS	BY

DYNAMIC TRAFFIC, LLC
 TRAFFIC IMPACT STUDIES • ACCESS PERMITTING
 HIGHWAY & INTERSECTION DESIGN
 TRAFFIC SIGNAL & ELECTRICAL DESIGN
 245 Main Street, Suite 110
 Chester, NJ 07930
 T: 732.481.0760 | F: 908.879.0222
 www.dynamictraffic.com

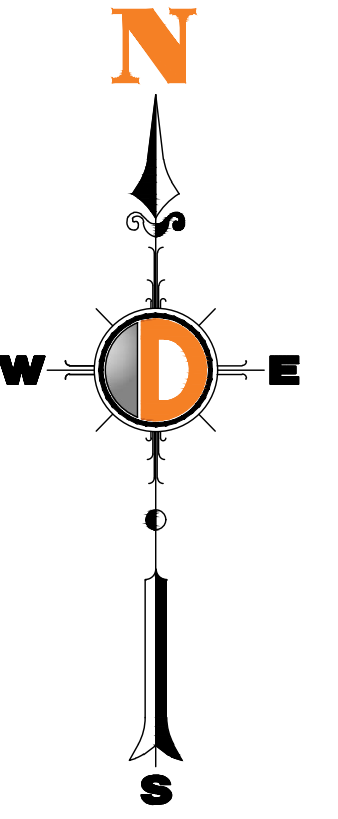
IV2 ROCKLAND LOGISTICS, LLC
VEHICLE CIRCULATION PLAN
 PROPOSED INDUSTRIAL PARK AT 25 OLD MILL ROAD
 SECTION 55.22 BLOCK 1, LOT 1
 OLD MILL ROAD & HEMION ROAD (CR 93)
 VILLAGE OF SUFFERN, ROCKLAND COUNTY, NEW YORK

811
 PROTECT YOURSELF
 ALL STATES REQUIRE NOTIFICATION OF
 EXCAVATORS, DESIGNERS, OR ANY PERSON
 PREPARING TO DISTURB THE EARTH'S
 SURFACE IN URGE IN ANY STATE
 FOR STATE SPECIFIC DIRECT PHONE NUMBERS VISIT:
 WWW.CALL811.COM

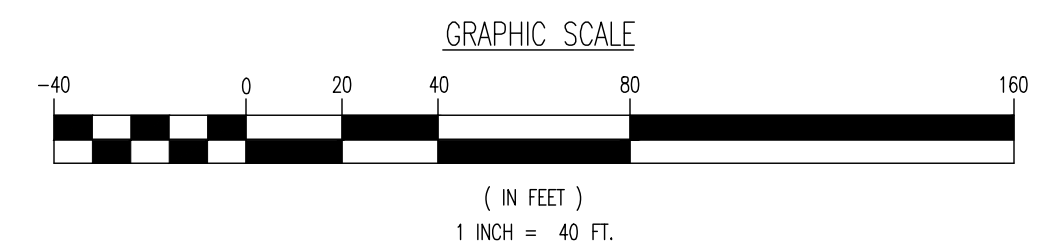
COREY M. CHASE
 PROFESSIONAL ENGINEER
 NEW YORK LICENSE No. 093631

KEVIN M. SAVAGE
 PROFESSIONAL ENGINEER
 NEW YORK LICENSE No. 105693

SCALE: 1"=30'	DRAWN BY: JTT	DESIGNED BY: JTT	CHECKED BY: KMS
PROJECT NUMBER: 3709-99-004T	DATE: 09/16/2022	REV. #: 0	
SHEET NUMBER: 2	OF 3		



**AIRMONT ROAD (CR 89) &
I-287/I-87/NYS THRUWAY RAMP**



REV	DATE	COMMENTS	BY

DYNAMIC TRAFFIC, LLC
 TRAFFIC IMPACT STUDIES • ACCESS PERMITTING
 HIGHWAY & INTERSECTION DESIGN
 TRAFFIC SIGNAL & ELECTRICAL DESIGN
 245 Main Street, Suite 110
 Chester, NJ 07930
 T: 732.481.0760 | F: 908.879.0222
 www.dynamictraffic.com

IV2 ROCKLAND LOGISTICS, LLC
VEHICLE CIRCULATION PLAN
 PROPOSED INDUSTRIAL PARK AT 25 OLD MILL ROAD
 SECTION 55.22 BLOCK 1, LOT 1
 OLD MILL ROAD & HEMION ROAD (CR 93)
 VILLAGE OF SUFFERN, ROCKLAND COUNTY, NEW YORK

811
 PROTECT YOURSELF
 ALL STATES REQUIRE NOTIFICATION OF
 EXCAVATORS, DESIGNERS, OR ANY PERSON
 PREPARING TO BURY THE EARTH'S
 SURFACE. ANYWHERE IN ANY STATE.
 FOR STATE SPECIFIC DIRECT PHONE NUMBERS VISIT:
 WWW.CALL811.COM

COREY M. CHASE
 PROFESSIONAL ENGINEER
 NEW YORK LICENSE No. 093631

KEVIN M. SAVAGE
 PROFESSIONAL ENGINEER
 NEW YORK LICENSE No. 105693

SCALE: 1"=40'	DRAWN BY: JTT	DESIGNED BY: JTT	CHECKED BY: KMS
PROJECT NUMBER: 3709-99-004T	DATE: 09/16/2022	REV. #: 0	
SHEET NUMBER: 3		OF 3	

Plotted: 09/16/22 - 12:23 PM. By: ksanogo. Product Ver: 24.1s (LMS Tech)
 File: T:\TRAFFIC PROJECTS\3709 Brookfield Properties_99-004T Suffern NY\Draw\Exhibits\2022-09 Truck Turning Exhibits\3709999004 TRUCK TURNING EXHIBITS.dwg. --> 03 VEHICLE CIRCULATION PLAN